



# Turnstiles—Full Height

## Data Sheet



# Turnstiles—Full Height



APS Full Height Turnstiles offer secure, efficient pedestrian traffic control. All turnstiles are designed and manufactured to the highest specification, using top quality components and materials to ensure ongoing robust, reliable operation.

## Features

- Available in single or double turnstile variations
- Available with 3-arm, 120 degree spacing or 4-arm, 90 degree spacing
- Manual mechanical or electrical operation with soft start feature
- Uni- and bi- directional movement
- Free two-way rotation in failsafe mode (should there be a power cut, etc.)

Available in a range of colour-coded enamel paint finishes, standard galvanised steel finish or stainless steel

## Access Control Interface

Full height turnstiles can be fitted with a multi-function logic system, enabling interface with a range of access control systems such as:

- card swipe systems
- coin/token systems
- digital keypads
- induction loops
- proximity readers
- push button or remote control

A range of optional accessories are available including:

- internal lighting for safe 24-hour usage
- warning lights for additional safety
- choice of straight tubular arms (with safety end caps) or U-shaped loops for ease and comfort of use
- non-slip flooring for pedestrian safety





# STADIUM TURNSTILES



APS offer a range of single and multiple full height turnstiles designed for stadium and other high traffic applications. They are constructed from heavy gauge mild steel with an option for graffiti resistant stainless steel, with matching arms.

The 120 degree spacing allows high traffic flow whilst providing comfort for the user. Turnstiles may be supplied as uni-directional or bi-directional with selectable entrance direction.











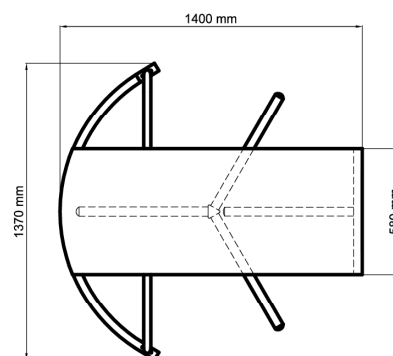
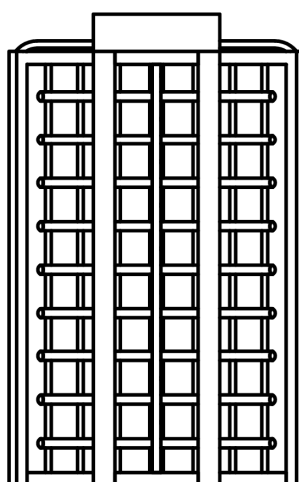
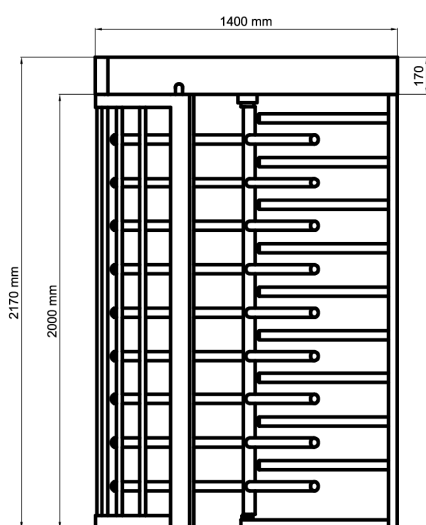
**Double Turnstile—Stainless Steel**



**External Turnstile—contrast rotor**

## Project Site Access Turnstile

Available with biometric access control



## Turnstile Specification

Clear opening width	2 x 700mm
Clear opening height	2000mm
Controlled rotation	120°
Main turnstile frame	120 x 80 x 3mm RHS
Top frame	40 x 40 x 2mm RHS
Side frame	60 x 40 x 2mm RHS
Side frame vertical infill@ 120mm centres	30 x 20 x 2mm RHS
Fixed fender arms @ 200mm centres	40mm diameter RHS
Stainless steel hairpin rotor arms	40mm
Base dimensions	1750 x 3500mmm

APS turnstiles are supplied as a complete assembled unit. The main frame is constructed from fully welded steel hollow sections. The optional drive systems, electrical control gear and roof are mounted on the top frame and the static fenders are welded to the side frames.

Double rotor turnstiles are also available in 'compressed' style where both sets of rotor arms overlap each other in the centre of the unit. The smaller overall dimension is very useful where space is restricted.

The stainless steel "hairpin" rotor arms are at 120° spacing, and are welded to the stainless steel centre axis tubes, which are mounted top and bottom on sealed bearings.

The optional electric drive systems are arranged to operate from a 230V, 50 Hz supply with integral motor, clutch and magnetic brake. The drives are arranged to gently turn the rotor once the arms have been pushed, however the drives will stop if there is any resistance to movement.

There are many options of control of manual and power driven turnstiles. All types of modern personnel access control systems can be interfaced with the programmable electrical control panel housed in the turnstile roof.

All overhead electrical control gear is enclosed in a weatherproof housing as standard. However a full roof with walkway lighting and rainwater ware is also available. APS turnstiles can be arranged to fail 'open' or 'locked' in the event of a power failure.

To ensure long term corrosion protection after fabrication, components are shot blasted, hot zinc sprayed and polyurethane primed before two high density polyurethane colour coats are applied. Both the primer and the colour coats are electro-statically applied. Colours are specified by the customer.

APS products are constructed to meet all European Regulations relating to Machinery Operational Directives and Safety Requirements

Foundation and general arrangement drawings are supplied shortly after an order has been placed, for dimensional approval, and to ensure that the foundations can be completed in good time before the turnstile is delivered. Wiring diagrams are delivered with the turnstile.



# Turnstile Specification

## Control Equipment

Key switch  
Table switch  
Wall switch  
Locking switch - (key can be removed when switch is locked/unlocked)  
Card access system, proximity or swipe, complete with cards  
Token access system complete with tokens  
Remote Open/Closed status indicator  
Remote 'Automatic' override switch ON/OFF  
Two Stop/Go lights, red and green  
Intercom system - Turnstile station and remote station including power supplies

## Functions

Turnstile locked in both/either directions  
Turnstile open in both/either directions  
Controlled entry/exit

## Security and Accessories

Serrated strips 30mm or 50mm high  
Steel spikes 10mm dia. x 50mm high @ 50mm centres  
Barbed wire in rows (as reqd.) on vertical supports  
Barbed wire in rows (as reqd.) on 'Y' supports  
Bell push-button  
Light switch  
Letter box  
Choice of roof, from small control gear cover to full size roof with flush lighting, rainwater ware etc.

Special control systems, panelling, cladding and dimensional variations upon request

Foundations, containment and cables must be installed by the purchaser,  
in accordance with details supplied by the manufacturer